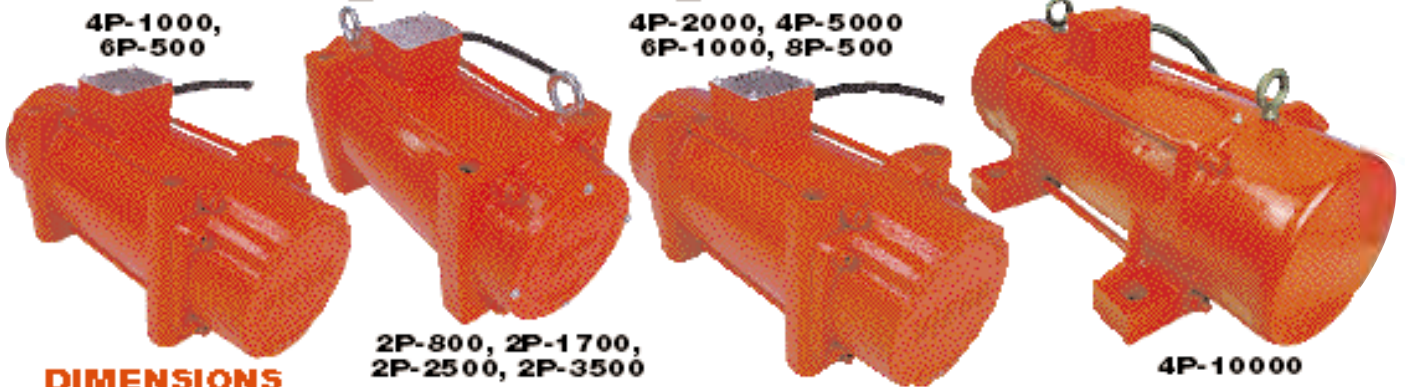


# Heavy Duty Electric

4P-1000,  
6P-500

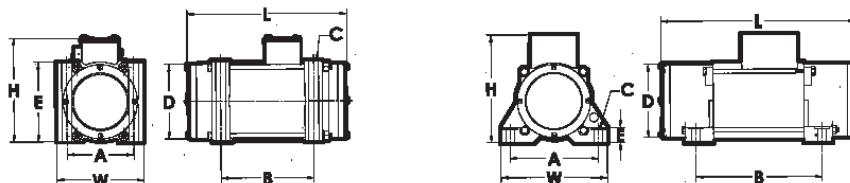
4P-2000, 4P-5000  
6P-1000, 8P-500



## DIMENSIONS

Model	Phase	A Inch/mm		B Inch/mm		C* Inch/mm		L Inch/mm		W Inch/mm		H Inch/mm		D Inch/mm		E Inch/mm	
2P-75	1 & 3	3	76	4 <sup>11</sup> / <sub>16</sub>	119	5 <sup>5</sup> / <sub>16</sub>	8	7 <sup>7</sup> / <sub>8</sub>	200	4 <sup>1</sup> / <sub>8</sub>	105	5	127	3 <sup>9</sup> / <sub>16</sub>	90	4 <sup>1</sup> / <sub>8</sub>	105
2P-100	1 & 3	3	76	4 <sup>13</sup> / <sub>16</sub>	122	5 <sup>5</sup> / <sub>16</sub>	8	8 <sup>3</sup> / <sub>16</sub>	208	4 <sup>1</sup> / <sub>8</sub>	105	5	127	3 <sup>9</sup> / <sub>16</sub>	90	4 <sup>1</sup> / <sub>8</sub>	105
2P-150	1 & 3	3 <sup>1</sup> / <sub>2</sub>	89	6 <sup>3</sup> / <sub>8</sub>	162	1 <sup>1</sup> / <sub>2</sub>	13	10 <sup>3</sup> / <sub>4</sub>	273	4 <sup>7</sup> / <sub>8</sub>	124	6 <sup>1</sup> / <sub>4</sub>	159	4	102	4 <sup>1</sup> / <sub>4</sub>	108
2P-200	1 & 3	4 <sup>1</sup> / <sub>2</sub>	114	7	178	1 <sup>1</sup> / <sub>2</sub>	13	11 <sup>1</sup> / <sub>2</sub>	292	5 <sup>3</sup> / <sub>4</sub>	146	6 <sup>3</sup> / <sub>4</sub>	171	5	127	5	127
4P-350																	
4P-600	1 & 3	4 <sup>1</sup> / <sub>2</sub>	114	7 <sup>7</sup> / <sub>8</sub>	200	1 <sup>1</sup> / <sub>2</sub>	13	13	330	5 <sup>3</sup> / <sub>4</sub>	146	6 <sup>3</sup> / <sub>4</sub>	171	5	127	5	127
2P-450	1	5	127	8 <sup>3</sup> / <sub>8</sub>	213	5 <sup>5</sup> / <sub>8</sub>	16	13 <sup>1</sup> / <sub>2</sub>	343	6 <sup>1</sup> / <sub>2</sub>	165	7 <sup>1</sup> / <sub>2</sub>	191	6	152	6	152
	3	5	127	(7 <sup>5</sup> / <sub>8</sub> )	194	5 <sup>5</sup> / <sub>8</sub>	16	12 <sup>3</sup> / <sub>8</sub>	314	6 <sup>1</sup> / <sub>2</sub>	165	7 <sup>1</sup> / <sub>2</sub>	191	6	152	6	152
2PS-450	1	5	127	(7 <sup>5</sup> / <sub>8</sub> )	194	5 <sup>5</sup> / <sub>8</sub>	16	12 <sup>3</sup> / <sub>8</sub>	314	6 <sup>1</sup> / <sub>2</sub>	165	7 <sup>1</sup> / <sub>2</sub>	191	6	152	6	152
	3	5	127	(6 <sup>7</sup> / <sub>8</sub> )	175	5 <sup>5</sup> / <sub>8</sub>	16	11 <sup>1</sup> / <sub>4</sub>	286	6 <sup>1</sup> / <sub>2</sub>	165	7 <sup>1</sup> / <sub>2</sub>	191	6	152	6	152
4P-700	1 & 3	5	127	(8 <sup>3</sup> / <sub>8</sub> )	213	5 <sup>5</sup> / <sub>8</sub>	16	13 <sup>1</sup> / <sub>8</sub>	333	6 <sup>1</sup> / <sub>2</sub>	165	7 <sup>1</sup> / <sub>2</sub>	191	6	152	6	152
4P-1000 6P-500	1 & 3	5	127	8 <sup>3</sup> / <sub>8</sub>	213	5 <sup>5</sup> / <sub>8</sub>	16	15 <sup>1</sup> / <sub>2</sub>	394	6 <sup>1</sup> / <sub>2</sub>	165	7 <sup>5</sup> / <sub>8</sub>	194	6	152	6	152
2P-800	1	5 <sup>1</sup> / <sub>2</sub>	140	9 <sup>5</sup> / <sub>8</sub>	244	5 <sup>5</sup> / <sub>8</sub>	16	15 <sup>1</sup> / <sub>4</sub>	387	7 <sup>1</sup> / <sub>2</sub>	191	8 <sup>1</sup> / <sub>2</sub>	216	7	178	7	178
	3	5 <sup>1</sup> / <sub>2</sub>	140	8 <sup>5</sup> / <sub>8</sub>	219	5 <sup>5</sup> / <sub>8</sub>	16	14 <sup>3</sup> / <sub>8</sub>	365	7 <sup>1</sup> / <sub>2</sub>	191	8 <sup>1</sup> / <sub>2</sub>	216	7	178	7	178
2P-1700	3	5 <sup>1</sup> / <sub>2</sub>	140	10 <sup>13</sup> / <sub>16</sub>	259	5 <sup>5</sup> / <sub>8</sub>	16	16 <sup>1</sup> / <sub>2</sub>	419	7 <sup>1</sup> / <sub>2</sub>	191	8 <sup>1</sup> / <sub>2</sub>	216	7	178	7	178
4P-1400	1 & 3																
2P-2500	3	5 <sup>1</sup> / <sub>2</sub>	140	11 <sup>5</sup> / <sub>8</sub>	295	5 <sup>5</sup> / <sub>8</sub>	16	17 <sup>1</sup> / <sub>2</sub>	445	7 <sup>1</sup> / <sub>2</sub>	191	8 <sup>1</sup> / <sub>2</sub>	216	7	178	7	178
2P-3500																	
2P-4500	3	5 <sup>1</sup> / <sub>2</sub>	140	11 <sup>5</sup> / <sub>8</sub>	295	5 <sup>5</sup> / <sub>8</sub>	16	18 <sup>1</sup> / <sub>2</sub>	470	7 <sup>1</sup> / <sub>2</sub>	191	8 <sup>1</sup> / <sub>2</sub>	216	7	178	7	178
2P-5500	3	7 <sup>7</sup> / <sub>8</sub>	200	12 <sup>13</sup> / <sub>16</sub>	325	1	25	22 <sup>1</sup> / <sub>4</sub>	565	10 <sup>1</sup> / <sub>4</sub>	260	10 <sup>1</sup> / <sub>2</sub>	267	8 <sup>7</sup> / <sub>8</sub>	225	8 <sup>7</sup> / <sub>8</sub>	225
4P-2000																	
6P-1000 8P-500	3	5 <sup>1</sup> / <sub>2</sub>	140	10 <sup>13</sup> / <sub>16</sub>	275	5 <sup>5</sup> / <sub>8</sub>	25	18	457	7 <sup>1</sup> / <sub>4</sub>	184	8 <sup>1</sup> / <sub>2</sub>	216	7	178	7	178
4P-3000																	
6P-1500 8P-750	3	7 <sup>7</sup> / <sub>8</sub>	200	12 <sup>3</sup> / <sub>4</sub>	324	1	25	22 <sup>1</sup> / <sub>2</sub>	572	10 <sup>1</sup> / <sub>4</sub>	260	10 <sup>1</sup> / <sub>2</sub>	267	8 <sup>7</sup> / <sub>8</sub>	225	8 <sup>7</sup> / <sub>8</sub>	225
4P-5000																	
6P-2500 8P-1250	3	7 <sup>7</sup> / <sub>8</sub>	200	12 <sup>13</sup> / <sub>16</sub>	325	1	25	24	610	10 <sup>1</sup> / <sub>4</sub>	260	10 <sup>1</sup> / <sub>2</sub>	267	8 <sup>7</sup> / <sub>8</sub>	225	8 <sup>7</sup> / <sub>8</sub>	225
4P-10000 + 6P-5000 + 8P-2500 +	3	12 <sup>5</sup> / <sub>8</sub>	321	15 <sup>1</sup> / <sub>2</sub>	394	1 <sup>1</sup> / <sub>4</sub>	32	29 <sup>3</sup> / <sub>4</sub>	756	15 <sup>5</sup> / <sub>8</sub>	397	13	330	10 <sup>3</sup> / <sub>4</sub>	273	2	51

\*Bolt Size +Use Figure 2 for dimensions Note: Dimensions and data subject to change without notice.



# Model US

# 115/230 Volt High Frequency Electric



Ask for Cat. #8401 or 0103

## MODEL US

- FEATURES:**
- HIGH SPEED
  - RUGGED
  - SPEED ADJUSTABLE
  - 115 VOLT PLUG IN

VIBCO's Model US High Frequency line are 115 volt single phase motors with low amperage draw. They can be plugged into any light outlet or operated from field generators. All units are speed adjustable with rheostat or electronic speed controls. US-900 and 1600 have adjustable eccentrics. The US line is, due to the high frequency, rated for intermittent operation. 230 volt available on most models. Consult factory.

### HIGH FREQUENCY VIBRATORS IDEAL FOR ALL CONCRETE WORK

#### FOR CONCRETE PRODUCT

- Faster pouring
- Less cement needed
- Greater density
- Smoother finish
- Faster form removal

#### FOR VIBRATOR

- Totally enclosed
  - High impact
  - Light weight
  - Assortment of brackets available
- See page 35 & 36.

#### Casting Concrete.

Model US is ideal both at the precast plant on tables, vaults, septic tanks, patio blocks, steps, etc., and at the construction site giving "architectural" finishes and fireproofing to poured-in-place walls and columns. Ask for Catalog 0103. Model US-900, the most popular unit for septic tanks, burial vaults, step forms, for architectural surface finish and fire proofing columns, casting tables for up to 300 lbs. of product. US-1600 the problem solver - for similar applications as the US-900. See page 35 and 36 for different brackets. Ask for Catalog 8401.

**Bins & Weigh-Batchers.** The US-450 has become the standard unit throughout the industry for weigh-batchers. The US-700, US-900 and US-1600 for moving powdery and sticky materials in bins and chutes.

**Fatigue and Test Tables.** For verifying integrity of electric circuits, removing dangerous residues, detect marginal connections.

### TECHNICAL DATA

Model	lbs.	Force N	Amps.**	Volts	Ph.	Max. Speed	dB*	Weight lbs.	Duty Cycle
US-100	100	445	.65	115 AC-DC	1	10000	78	4 1.8	Int.
US-450	450	2002	2.0	115 AC-DC	1	9500	80	13 6.9	Int.
US-700	700	3115	2.5	115 AC-DC	1	9500	80	20 9.1	Int.
US-900	900	4004	4.5	115 AC-DC	1	10000	85	18 8.2	Int.
US-1600	1600	7118	5.0	115 AC-DC	1	9500	85	20 9.1	Int.
DC-20	20	89	3.7	8 & 12 DC	1	3500	88	3 1.4	Cont.
DC-50	50	225	8	12 & 24 DC	1	3500	71	6 2.72	Cont.
DC-60	50	267	9	12 & 24 DC	1	3500	68	9 3.8	Cont.
DC-100	100	445	12	12 & 24 DC	1	4000	72	4 1.8	Cont.
DC-200	300	1334	14	12 & 24 DC	1	4000	73	8 3.6	Cont.
DC-300	350	1567	16	12 & 24 DC	1	4000	74	9 4	Cont.
DC-450	400	1780	22	12 & 24 DC	1	7000	75	17 7.7	Cont.
DC-600	450	2005	18	12 & 24 DC	1	4000	73	12 5.5	Cont.
DC-700	700	3115	25	12 & 24 DC	1	6000	75	20 9.1	Int.
DC-800	600	2688	30	12 & 24 DC	1	6000	78	20 9.1	Special
DC-1600	1000	4450	32	12 & 24 DC	1	5000	82	30 13.6	Special
DC-3500	2500	15572	60	12 & 24 DC	1	4000	70	36 16.3	Special

Note: The frequency will vary with the load. \*Decibel on A-scale at 3' (1 meter) N=Centrifugal force in Newton. \*\*Amps shown for 12 volt DC (24 volt amps 1/2 of 12 volts) \*\*\*230 Volt available on most US-Models Note: Dimensions and data subject to change without notice.

# “SILENT” Pneumatic

## CC SERIES



**CCF-2000  
CCF-4000**



**CCF-5000  
CCF-7000**

**CCL-2000  
CCL-4000**  
Use LC-2  
bracket



LUG BRACKET  
FOR



**CCL-7000  
CCL-5000**  
Use LC-1  
bracket

## MODEL CC HEAVY DUTY

- **QUIET**
- **MEETS OSHA STANDARDS**
- **NO LUBRICATION REQUIRED**

The only unit on the market to offer high force and absolutely quiet operation. Six units available. They all work on the **patented turbine principle**. Compressed air drives a specially designed turbine wheel, allowing the air to be channeled through the unit, then exhausting through muffler pads, making them virtually noiseless. None of these units need lubrication, all are prelubricated for life. Oversized bearings give the units years of trouble-free service.

### **MODEL CCF-2000 & -4000, CCF-5000 & -7000**

The quiet solution for large bins, hoppers and chutes. Ideal for the packing table and screen applications. The lightweight and high force output, CCF-2000 with 2,000 lbs. of force and CCF-5000 with 5,000 lbs. of force, replaces noisy 3 and 4" piston vibrators. The CCF-7000 with 7000 lbs. of force, 7200 VPM and 78dB is ideal for precast and prestressed concrete and replaces noisy roller vibrators with 100-110 dB.

### **MODEL CCW-2000 & 4000**

For portable applications CCW-2000 comes with either a 2" or 3" wide wedge. The 2" wedge is used on septic tanks, man holes, columns, portable hoppers and tote bins. The 3" wedge is used for larger forms such as wall and utility vaults, etc.

- **EASILY REPAIRED IN THE FIELD**
- **PATENTED DESIGN**

### **MODEL CCW-5000**

CCW-5000 the Quiet Railroad Carshaker, has in the last few years replaced the noisy piston railroad carshakers. Not only are they quiet, they need no lubrication and outlast the piston 3 to 1. Replaces 3" & 4" piston vibrators.

### **MODEL CCL-2000, -4000, -5000 & -7000**

The portable CCL-2000 uses the LC-2 lug bracket. Its light weight makes it ideal for all small concrete precast forms. Model CCL-5000 with its 75dB rating is ideal for tables, casting concrete panels, window frames, etc. or replacing large piston vibrators 4" and up on large bins. CCL-7000 with its special turbine wheel for below OSHA operation, only 78dB and high force 7000 lbs. and 7200 VPM, is now replacing the noisy 100-110dB roller vibrators in the concrete pipe, prestressed and precast industries. No lubrication is necessary. The oversized prelubricated bearings assure a long and maintenance free life.

### **MODEL VSP-510**

VSP-510 - A silent unit for concrete burial vaults, etc. as well as other applications where the vibrator is moved from form to form or bin to bin. They meet OSHA standards for being completely noiseless, never need lubrication and outlast standard pistons three to one.

Dimensions: 7"L x 4"W x 8"H

Pin Diameter: 1" - Fits into UPF female bracket.

# Pneumatic Ball

## MODEL BB



**BB-100**



**BB-160**



**BB-130**



**BB-190**

## MODEL V



**V-100**



**V-190**



**V-130**



**V-250**



**V-320**



**V-380**

## MODEL BV



**BV-60**



**BV-190**



**BV-320**



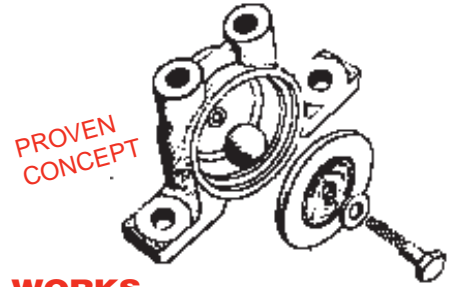
**BV-130**



**BV-250**

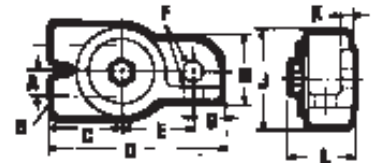


**BV-380**



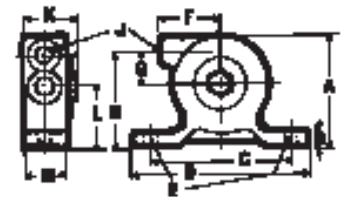
## HOW IT WORKS

Compressed air drives a hardened steel ball at high speeds around a highly finished and hardened steel race creating high frequency vibration. VIBCO BALL VIBRATORS require lubrication for long maintenance-free operation, start in any position. Mount VIBCO BALL VIBRATOR either directly to structure to be vibrated, or use simple mounting plates welded or bolted to the structure for better vibration transfer to a larger surface.



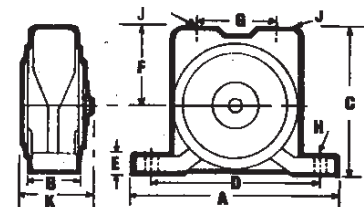
## MODEL BB

The BB Series can be equipped with a muffler on the threaded exhaust port. The threaded exhaust also allows oily exhaust air to be piped away from the area of operation if absolute cleanliness is required. These dual mount vibrators are designed for applications requiring a small to medium amount of vibration such as laboratory equipment, small hoppers, part feeders, chutes and match plates.



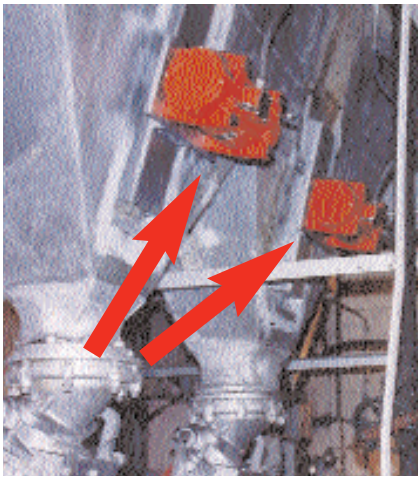
## MODEL V

The V-line ball vibrators are the most versatile units. Lowest in cost, light and sturdy, they're made to work in adverse conditions of water, heat, cold or dirt, and in any position. The most versatile and popular unit is the V-320 considered the work horse of the line producing 600 lbs. at 10,000 VPM. Models V-100 & V-130 have built-in exhaust mufflers. All other models have threaded exhaust ports. For units with built-in mufflers, order V-19SE, V-25SE, V-35SE, OR V41SE

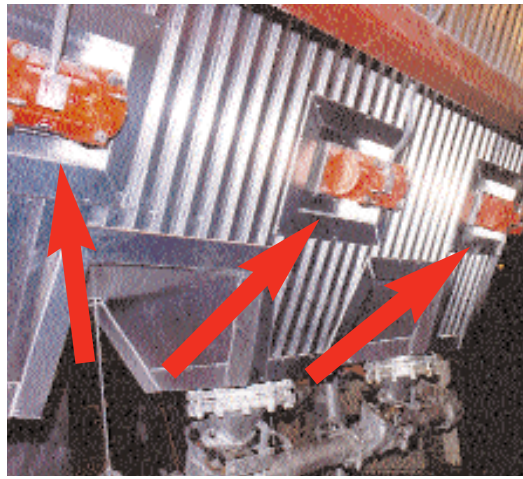


## MODEL BV

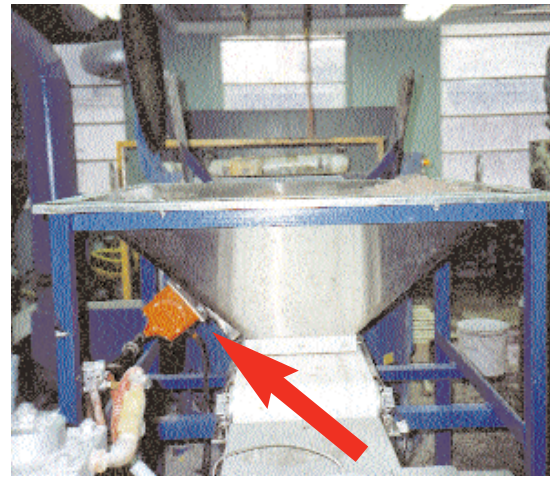
The BV Series like the others requires lubrication. Will withstand continuous operation at high temperatures up to 350° by maintaining a constant low air pressure of 5 to 10 PSI through unit when not in operation. The easily exchangeable ball races make them easy to repair for prolonged life at a small cost. The top air outlet port allows discharged air to be silenced by a muffler, or piped away from the area of operation if absolute cleanliness is required.



Two Model 2P-800's feeding screw conveyor

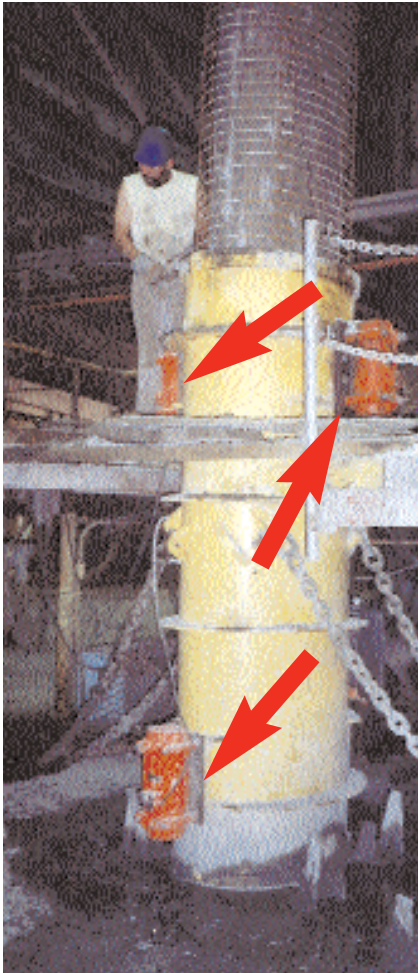


Model 2P-3500 on multiple chemical bins

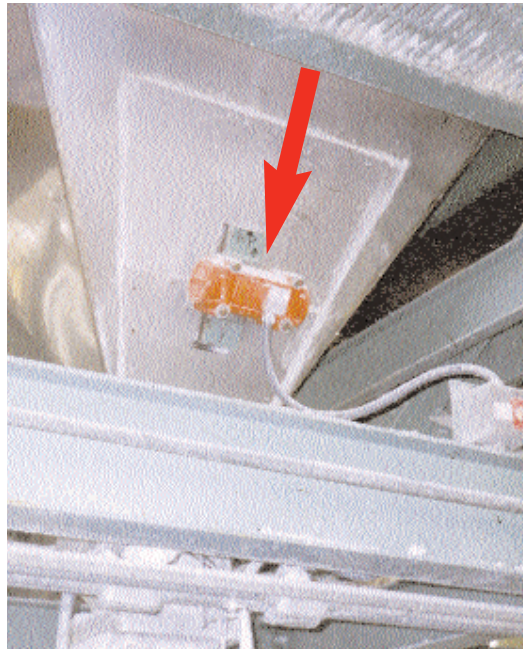


Model 2P-150 on hopper feeding conveyor belt

## Vibrators In Action



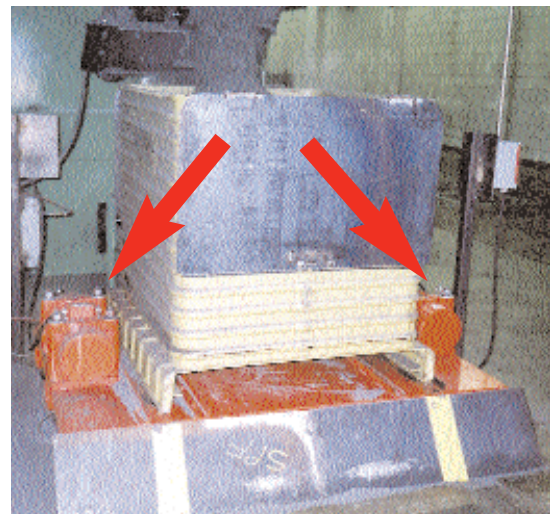
Model 2P-4500 on pipe form



Model 2P-1700 on gypsum board



Two Model 4P-5000's on feeder



Two Model 4P-3000's on gaylord packing table

Model 2P-200 on transfer bin

**Call a VIBCO  
Application  
Engineer  
for your  
application  
today!**